

April 2001

Sun	Mon	Tue	Wed	Thu	Fri	Sat
1	2	3	4	5	6	7
8	9	10	11	12	13	14
15	16	17	18	19	20	21
22	23	24	25	26	27	28
29	30					

Schedule of Events

- 4/15 Easter Sunday
- 4/26-27 Acadiana Branch Spring Seminar



Acadiana Branch

American Society of Civil Engineers

Volume 19, Issue 5

April 2001

Upcoming Events

- National & Section ASCE dues - January 2001
- Jan. 22-23; Water & Wastewater, Dallas, TX.
- January 25-26; Construction Project Administration, Phoenix, AZ.
- Jan. 31-Feb 2; Urban Subsurface Drainage, New Orleans, LA.
- Feb. 1-2, 2001; Residential Land Development, Houston, TX.
- March 1/March 2, 2001; Intro to HEC-HMS, Intro to HEC-RAS, Baton Rouge, LA.

For more information, go to the Conferences & Continuing Education pages on the web at www.asce.org/conted or contact Kimberly Landry.

President's Message

The ASCE/LES Christmas Social was held on December 14th at Ray's Sports Bar and Grill. We hope everyone had a good time at the Social and a happy holiday season.

The Shreveport Branch will host the ASCE Spring Conference. The Conference will be held from March 29-30 at the Shreveport Sheraton, Shreveport LA. The Schedule of Events and Registration Form are enclosed.

ASCE dues are due this month. Please remember to pay both National and Section Dues.

Lastly, MATHCOUNTS will be held Saturday, February 10 at the University of Louisiana at Lafayette. Volunteers are needed from 8:15 a.m. to 12:30 p.m. and/or 8:45 a.m. to 12:30 p.m. Please call Craig Rogers at 337-291-8534 if you are able to volunteer.

Jan C. Robichaux, E.I.



Acadiana Branch
909 1/2 East University Avenue, Apt. B Lafayette, LA. 70503

Civil Engineering
a better world by design



Table of Contents

February Spotlight	2
Branch News	2
Student Chapter Corner	2
Contact Information	2
2001 ASCE Spring Conference Registration Form & Tentative	Insert
ASCE Sponsors	3
Calendar of Events	4

April Branch Meeting

DATE: Wednesday, April 18, 2001

LOCATION: Hotel Acadiana
1801 W. Pinhook Road
Lafayette, LA.

TIME: Noon

SPEAKER: Sheriff Mike Neustrom

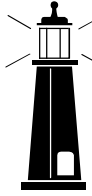
DINNER: "Cajun" Pork Roast, Corn Bread Stuffing, Dirty Rice, Seasonal Garden Greens, Broccoli Au Gratin, Baked Rolls, Honey Pecan Pie, Tea, Coffee

PRICE: \$12 per professional
\$6 per student

RSVP: Please RSVP with Glenn McCall (337-237-2200, glenn@Fenstermaker.com) by April 16, 2001



April Spotlight



Newly elected Lafayette Parish Sheriff Mike Neustrom will be our guest speaker at the January Branch meeting. Mr. Neustrom will discuss the ongoing transition from the Sheriff Don Breaux era to the new Administration and will outline the agenda for his first 6 months in office. In addition,

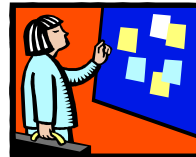
Sheriff Neustrom will discuss future goals for the further advancement of the Sheriff's department.

Branch News

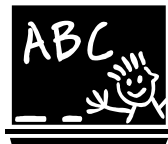
Just a reminder that the ASCE membership drive is still underway. The first five ASCE members to recruit 3 or more members will be given a \$50 gift certificate to the restaurant of their choice. Please notify one of the Board members once you have recruited the new members.

The ASCE commercial previ-

ously reported in this column is still under production. Keep checking here for the latest information and future airing schedule.



Student Chapter Corner



National ASCE Student membership is now free! New national members may register at www.asce.org/membership/sappform.html; Current members go to www.asce.org/membership/studupdate.html

Attention ASCE Student Chapter Leaders!

Please contact Kimberly Landry (337-291-8522; klandry@lafayettegov.com) to post your Chapter's activities in this newsletter. Chapter information must typically be received before the 4th of each month for inclusion in the newsletter.

Board of Directors:

President
Jan C. Robichaux, E.I.
337-856-5981
JanRobi@southernstructures.com

President Elect
Glenn McCall, E.I.
337-237-2200
glenn@fenstermaker.com

Vice President
Larry Cramer, P.E.
337-232-0777
lcramer@sellersandassociates.com

Treasurer
John Bosch, E.I.
337-291-8590
jbosch@lafayettegov.com

Secretary
Kimberly Landry, E.I.
337-291-8522
klandry@lafayettegov.com

Past President
David S. Huval, Jr., P.E.
337-234-3798
huval@lstmet.com

Committee Members:

Younger Members Committee
Boyd Simon, E.I.
337-234-6199

Membership Chairperson
Phillip Parker, P.E.
337-233-9914

Public Relations Chairperson:
Bridget Pitre Endom, E.I.
337-291-5879

Web Page Administrator:
Kimberly Landry, E.I.
337-291-8522

University of Louisiana at Lafayette ASCE Student Chapter Contact Persons:

Jan Robichaux, E.I.
337-856-5981

McNeese State University ASCE Student Chapter Contact Persons:

William H. Miller, P.E.
337-439-4552

Classifieds@asceacadiana.org

Is your firm in need of a Civil Engineer and/or Professional Land Surveyor? Contact Kimberly Landry to advertise in this space.