

# February 2001

Sun	Mon	Tue	Wed	Thu	Fri	Sat
				1	2	3
4	5	6	7	8	9	10
11	12	13	14 	15	16	17
18	19 	20	21	22	23	24
25	26	27	28			

## Schedule of Events

- **2/2** Ground Hog's Day
- **2/14** Valentine's Day, Branch Meeting
- **2/15** 2001 Chapter Dues
- **2/19** President's Day



## Acadiana Branch

American Society of Civil Engineers

Volume 19, Issue 5

February 2001

### Upcoming Events

- March 29-30; 2001 Louisiana Section Spring Conference, Shreveport, LA.

Go to the 'Conferences & Continuing Education' pages on the web at [www.asce.org/conted](http://www.asce.org/conted) for more continuing education topics,

### President's Message

The Acadiana Branch sponsored a joint membership meeting with LES on January 10, 2001 at the Hotel Acadiana. Lafayette Parish Mike Neustrom, our guest speaker, discussed the transition from the previous administration and presented his goals for the future advancement of the Sheriff's department.

Shreveport LA. Please contact one of the Board members if you have any questions, or if you need information about the conference.

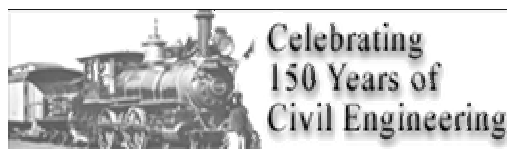
Lastly, the Acadiana Branch will host the annual Spring Seminar from April 26-27 at the Hotel Acadiana in Lafayette. [Editor's note: Please see page 2 and the enclosed registration form for more information.]

Jan C. Robichaux, E.I.



Acadiana Branch  
909 1/2 East University Avenue, Apt. B Lafayette, LA. 70503

Civil Engineers - Designers and Builders  
of the Quality of Life



### Inside this issue:

February Spotlight	2
Branch News	2
Sponsors	3
Acadiana Branch Seminar Registration Form	Insert
Student Chapter News	4
ASCE National News	4
Calendar of Events	5

The Shreveport Branch will host the ASCE Spring Conference. The Conference will be held from March 29-30 at the Shreveport Sheraton,

### February Branch Meeting

**DATE:** Wednesday, February 14, 2001

**LOCATION:** Chungking Restaurant  
5451 Johnston Street  
Lafayette, LA.

**TIME:** Noon

**SPEAKER:** N/A

**DINNER:** Chinese Buffet

**PRICE:** \$10 per professional  
\$5 per student

**RSVP:** Please RSVP with Glenn McCall (337-237-2200, [glenn@Fenstermaker.com](mailto:glenn@Fenstermaker.com)) by February 12, 2001



## February Spotlight

The Acadiana Branch will host the annual Spring Seminar at the Hotel Acadiana from April 26-27. The seminar topic is "Deep Foundations: Design, Construction, & Quality Control." The course will present techniques for the design, installation, and verification of deep foundations. The seminar instructors will be Mr. Dan A. Brown, P.E., Ph.D. and Mr. Mohamad Hussein, P.E.

Mr. Brown is Gottlieb Associate Professor of Civil Engineering at Auburn University. He was Chief Engineer of Soil Testing Engineers, Inc. in Baton Rouge and was the past chairman of the Committee

on Deep Foundations. Currently, Mr. Brown is chairman of the Organizing Committee for the Deep Foundations 2002 International Conference.

Mr. Hussein is Partner in GRL and Associate, Inc., a consulting civil engineering firm, and Pile Dynamics, Inc., an electronic equipment manufacturing company, both specializing in dynamic testing and evaluations of deep foundations methods and equipment. Mr. Hussein is the current Chairman of the Deep Foundations Committee of the Geo-Institute of ASCE, he is also an active member of the Pile Foundations Stan-

dards Committee of ASCE's Geotechnical & Construction Standards Council, and he is on the Editorial Board of ASCE's Journal of Geotechnical and Geoenvironmental Engineering.

Please see the enclosed flyer for more information about the seminar. If you would like to attend, please complete the registration form and return to the indicated address.



### Board of Directors:

**President**  
Jan C. Robichaux, E.I.  
337-856-5981  
JanRobi@southernstructures.com

**President Elect**  
Glenn McCall, E.I.  
337-237-2200  
glenn@fenstermaker.com

**Vice President**  
Larry Cramer, P.E.  
337-232-0777  
lcramer@sellersandassociates.com

**Treasurer**  
John Bosch, E.I.  
337-291-8590  
jbosch@lafayettegov.com

**Secretary**  
Kimberly Landry, E.I.  
337-291-8522  
klandry@lafayettegov.com

**Past President**  
David S. Huval, Jr., P.E.  
337-234-3798  
huval@1stnet.com

### Committee Members:

**Younger Members Committee**  
Boyd Simon, E.I.  
337-837-5447

**Membership Chairperson**  
Phillip Parker, P.E.  
337-233-9914

**Public Relations Chairperson:**  
Bridget Pitre Endom, E.I.  
337-291-5879

**Web Page Administrator:**  
Kimberly Landry, E.I.  
337-291-8522

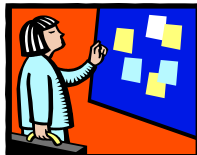
**University of Louisiana at Lafayette ASCE Student Chapter Contact Persons:**

Jan Robichaux, E.I.  
337-856-5981

McNeese State University ASCE Student Chapter Contact Persons:

William H. Miller, P.E.  
337-439-4552

## Branch News



As previously mentioned in this column, the 1999-2000

Branch Board of Directors commissioned the production of a television commercial to promote civil engineering to middle school students. Past President David Huval, Jr., who headed the effort, gave

Branch members a sneak peak at the commercial during our January meeting. We hope to begin airing the commercial locally by March.

The ASCE membership drive is still underway. The first five ASCE members to recruit 3 or more members will be given a \$50 gift certificate to the restaurant of their choice.

Please notify one of the Board

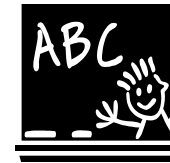
members once you have recruited the new members.

## Professional Milestones



Has a member of your firm or company recently marked a career milestone? Submit his or her name to Kimberly Landry for inclusion in this column!

## Student Chapter Corner



**University of Louisiana at Lafayette**

by Michelle Iblings, Secretary

The Spring 2001 semester is underway and we have already started preparing for the activities and competitions to come. Our first ASCE meeting of the semester was held on February 8th to elect the 2001-2002 officers. We would like to congratulate our new officers and wish them a successful term. UL-ASCE would like to invite all UL faculty and Acadiana Branch members to our meetings. Lastly, just a reminder that UL-Civil Engineering T-Shirts are on sale for \$10,

available at Madison Hall, Room #254.

### UL-ASCE Calendar of Events:

Feb 17; LES Basketball tournament at Bourgeois Hall

Feb 18; Deadline to submit 2000 Chapter Annual Report & Deadline for 2001 Chapter Dues

Feb 23; Deadline to register for the EIT

March 3; LES Softball Tournament at Cajun Field

### Notable Dates from ASCE National:

2/9; ASCE Scholarship & Fellowship Deadline

2/15; Deadline to submit 2000 Chapter Annual Report & 2001 Chapter annual

dues to ASCE Student Services

3/1; ASCE Student Regional conferences begin and continue through early May; deadline to submit Mead Student Paper contest entries

[Please contact Kimberly Landry (337-291-8522; klandry@lafayettegov.com) to post your Chapter's activities in this newsletter. Chapter information must typically be received before the 4th of each month for inclusion in the newsletter.]

## ASCE National News



The Board of Direction approved, by two-thirds vote on second reading, an amendment to the Bylaws Article IV, Sections III and IV, to eliminate application fees for all grades of membership. Application fees will be eliminated and publicity of this action will begin immediately in order to identify the need to change existing application forms.

- Participating in K thru 12 programs to encourage students to pursue careers in civil engineering
- Participating in the education activities of professional and technical organizations

**The final deadline for receipt of nominations is February 28, 2001.**

For additional information and an application form, contact Janine M. Jescavage at jjescavage@asce.org or (800) 548-ASCE (ext. 6080).

Nomination packets for the 2001 Outstanding Section/Branch Awards will be distributed to Section/Branch Presidents in April. Nominations are due **October 30.**

The Committee on Diversity and Women in Civil Engineering invites you to participate in National Engineers Week 2001 by "Introducing a Girl to Engineering." For National Engineer's Week, the engineering community is being asked to launch "Introduce a Girl to Engineering Day." Our goal is to have some 100 organizations mobilize as many women

engineering as possible—a target of 10,000—who, along with their male colleagues, will reach one million girls. "Introduce a Girl to Engineering" culminates on February 22 during National Engineers Week and will become part of the annual Engineers Week campaign. Particular focus will be placed on reaching K-12 girls with positive messages about math and science education and engineering careers.

Nominations for **National ASCE Student Chapter Scholarships** are due at ASCE World Headquarters on February 15, 2001.

### Continuing Education Courses

4/2-5; Surface Water Modeling, Dallas, TX

4/18-20; Slope Stability, Austin, TX

4/23-20; Work Zone Traffic Control, New Orleans, LA

4/26-27; Design & Installation of Buried Pipes, New Orleans, LA

5/2-3; Intermodal Freight & ITS, Fort Worth, TX