



Acadiana Branch

American Society of Civil Engineers

Volume 19, Issue 4

January 2001

Upcoming Events

- National & Section ASCE dues - January 2001
- Jan. 22-23; Water & Wastewater, Dallas, TX.
- January 25-26; Construction Project Administration, Phoenix, AZ.
- Jan. 31-Feb 2; Urban Subsurface Drainage, New Orleans, LA.
- Feb. 1-2, 2001; Residential Land Development, Houston, TX.
- March 1/March 2, 2001; Intro to HEC-HMS, Intro to HEC-RAS, Baton Rouge, LA.

For more information, go to the Conferences & Continuing Education pages on the web at www.asce.org/conted or contact Kimberly Landry.

President's Message

The ASCE/LES Christmas Social was held on December 14th at Ray's Sports Bar and Grill. We hope everyone had a good time at the Social and a happy holiday season.

The Shreveport Branch will host the ASCE Spring Conference. The Conference will be held from March 29-30 at the Shreveport Sheraton, Shreveport LA. The Schedule of Events and Registration Form are enclosed.

ASCE dues are due this month. Please remember to pay both National and Section Dues.

Lastly, MATHCOUNTS will be held Saturday, February 10 at the University of Louisiana at Lafayette. Volunteers are needed from 8:15 a.m. to 12:30 p.m. and/or 8:45 a.m. to 12:30 p.m. Please call Craig Rogers at 337-291-8534 if you are able to volunteer.

Jan C. Robichaux, E.I.

Inside this issue:

January Spotlight	2
Branch News	2
Student Chapter Corner	2
Contact Information	2
2001 ASCE Spring Conference Registration Form & Tentative	Insert
ASCE Sponsors	3
Calendar of Events	4

January Branch Meeting (ASCE/LES Joint Meeting)

DATE: Wednesday, January 10, 2001

LOCATION: Hotel Acadiana
1801 W. Pinhook Road
Lafayette, LA.

TIME: Noon

SPEAKER: Sheriff Mike Neustrom

DINNER: "Cajun" Pork Roast, Corn Bread Stuffing, Dirty Rice, Seasonal Garden Greens, Broccoli Au Gratin, Baked Rolls, Honey Pecan Pie, Tea, Coffee

PRICE: \$12 per professional
\$6 per student

RSVP: Please RSVP with Glenn McCall (337-237-2200, glenn@Fenstermaker.com) by January 8, 2001



January Spotlight



Newly elected Lafayette Parish Sheriff Mike Neustrom

will be our guest speaker at the January Branch meeting. Mr. Neustrom will discuss the ongoing transition from the Sheriff Don Breaux era to the new Administration and will outline the agenda for his first 6

months in office. In addition, Sheriff Neustrom will discuss future goals for the further advancement of the Sheriff's department.

Branch News

The National ASCE deadline for payment of dues is this month. Please remember to pay both National and Section dues.

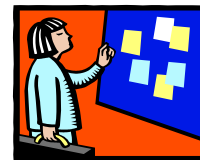
Glenn McCall and Larry Cramer will attend the Zone II Management Conference from January 5-7 in New Orleans. The conference is an excellent opportunity for members to exchange in-

formation and ideas with other Branch leaders.

Just a reminder that the ASCE membership drive is still underway. The first five ASCE members to recruit 3 or more members will be given a \$50 gift certificate to the restaurant of their choice. Please notify one of the Board members once you have recruited the new

members.

The ASCE commercial previously reported in this column is still under production. Keep checking here for the latest information and future airing schedule.



Board of Directors:

President
Jan C. Robichaux, E.I.
337-856-5981
JanRobi@southernstructures.com

President Elect
Glenn McCall, E.I.
337-237-2200
glenn@fenstermaker.com

Vice President
Larry Cramer, P.E.
337-232-0777
lcramer@sellersandassociates.com

Treasurer
John Bosch, E.I.
337-291-8590
jbosch@lafayettegov.com

Secretary
Kimberly Landry, E.I.
337-291-8522
klandry@lafayettegov.com

Past President
David S. Huval, Jr., P.E.
337-234-3798
huval@1stnet.com

Committee Members:

Younger Members Committee
Boyd Simon, E.I.
337-234-6199

Membership Chairperson
Phillip Parker, P.E.
337-233-9914

Public Relations Chairperson:
Bridget Pitre Endom, E.I.
337-291-5879

Web Page Administrator:
Kimberly Landry, E.I.
337-291-8522

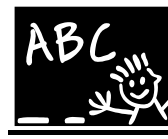
University of Louisiana at Lafayette ASCE Student Chapter Contact Persons:

Jan Robichaux, E.I.
337-856-5981

McNeese State University ASCE Student Chapter Contact Persons:

William H. Miller, P.E.
337-439-4552

Student Chapter Corner



Notable Dates:

Jan. 5-7; Zone II Workshop, New Orleans, LA.

Jan. 31; Deadline for Student Regional Conference Hosts to submit Agenda & Transmittal Letter to ASCE Student Services

Feb. 9; ASCE Scholarship &

Fellowship Application Deadline

Feb 15; Deadline to submit 2000 Chapter Annual Report & Deadline for 2001 Chapter Dues

National ASCE Student membership is now free! New national members may register at www.asce.org/membership/sappform.html; Current members go to www.asce.org/membership/studupdate.html

Attention ASCE Student Chapter Leaders!

Please contact Kimberly Landry (337-291-8522; klandry@lafayettegov.com) to post your Chapter's activities in this newsletter. Chapter information must typically be received before the 4th of each month for inclusion in the newsletter.

January 2001

Sun	Mon	Tue	Wed	Thu	Fri	Sat
	1 	2	3	4	5	6
7	8	9	10	11	12	13
14	15	16	17	18	19	20
21	22	23	24	25	26	27
28	29	30	31			

Schedule of Events

- **1/1** New Years Day
- **1/10** Branch Meeting
- **1/15** Martin Luther King, Jr. Day



909 1/2 East University Avenue, Apt. B
Lafayette, LA. 70503

Civil Engineers - Designers and Builders of the Quality of Life

