



# Acadiana Branch

American Society of Civil Engineers

Volume 20, Issue 1

September 2001

### Upcoming Events

- October 10-23; Houston 2001 Civil Engineering Conference & Exposition

For early pre-registration discounts, postmark form with payment by **August 17** (or September 17). Cancellations must be made in writing to ASCE by **September 17** in order to receive a refund; a \$50 processing fee will be deducted from the registration fee. Additional event tickets will be fully refunded, if cancelled in writing by **September 17**. Fax cancellation request to: (703) 295-6144. **NO REFUNDS WILL BE MADE FOR CANCELLATIONS RECEIVED AFTER SEPTEMBER 17, 2001.**

#### Professional Development Hours/ Continuing Education Units

Earn up to 18 nationally recognized professional development hours (PDHs) by attending the full Conference program including Conference Sessions and Plenary Sessions. Continuing Education Units (CEU's) may be earned by registering and attending the various Continuing Education Seminars available during the Conference

For more information, go to <http://www.asce.org/conferences/annual01/>.

### President's Message

The ASCE Acadiana Branch Board of Directors would like to open the new term by inviting all ASCE members to the September 12, 2001 Installation Banquet. We would especially like to welcome aboard our newly elected Secretary, Dax Douet, E.I. The 2001-2002 ASCE Acadiana Branch officers are:

- President.....Glenn McCall, P.E.
- President-Elect.....Larry Cramer, P.E.
- Vice President.....John Bosch, P.E.
- Secretary.....Dax Douet, E.I.
- Treasurer.....Kimberly Landry, E.I.
- Past President.....Jan Robichaux, E.I.

Our annual joint ASCE/LES/IEEE Crawfish boil was held Friday, May 11, 2001 at Acadiana Park in Lafayette. In addition to crawfish, hamburgers, and other treats, the Branch provided a fun jump

for the children. Elections for the 2001-2002 term Acadiana Branch officers were also held during the crawfish boil.

Lastly, I would like to thank the Acadiana Branch for supporting my involvement with ASCE through the years, especially during my term as President. As many of you know, I am moving to Houston, Texas next month. The people of Acadiana and the local engineering community have made living and working here an enjoyable and rewarding experience.

Jan C. Robichaux, E.I.

### Inside this issue:

September Spotlight	2
Branch News	2
Sponsors	3
Calendar of Events	4

### September Branch Meeting

**DATE:** Wednesday, September 12, 2001

**LOCATION:** Petroleum Club  
111 Heymann Blvd  
Lafayette, LA.

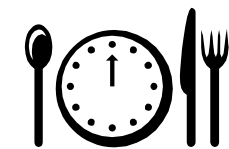
**Social:** 6:30 p.m.  
**Banquet:** 7:00 p.m.

**SPEAKER:** DeWitt Braud  
LSU Professor of Geography & Anthropology

**DINNER:** Prime Rib of Beef or Broiled Catfish with Shrimp Sauce  
Salad, Vegetables, and Dessert

**PRICE:** \$15 per professional  
\$10 per student

**RSVP:** Please RSVP with Glenn McCall (337-237-2200, glenn@Fenstermaker.com) by September 10, 2001



## September Spotlight

The guest speaker will be DeWitt Braud, a LSU Professor of Geography & Anthropology. Mr. Braud will be making a demonstration of the LOUISIANA GIS CD: A Digital Map of the State.

The Louisiana GIS CD is a two CD set that contains over 40 spatial layers of geographic data organized by north and south Louisiana. The CD is the culmination of several years of data development and assembly by sponsoring agencies, and was developed by Louisiana State University with funding from the Louisiana Oil Spill Coordinator's Office. The spatial data on the CD includes a satellite image of Louisiana with environmental, transportation, boundary, and geographic

data in raster, polygon, line and point format.

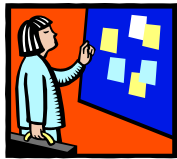
The spatial data are displayed and manipulated with a Geographic Information Systems (GIS) that comes with the CD. The CD also comes with a user interface that provides easy access to instructions and documentation, software installation, and tutorials. The tutorials provide help for utilization of the GIS software and introductions to GIS concepts. The spatial data are accompanied by fully compliant Federal Geographic Data Committee (FGDC) metadata. There is also a satellite tour of Louisiana accessible from the user interface.

The CD was originally conceived for Oil Spill Planning

and Response, but is applicable for numerous other applications ranging from environmental and resource management to political, business, cultural and demographic. The GIS system on the CD provides the ability to view, query, manipulate, analyze, and perform numerous functions on the data that will assist in performing research, creating and plotting unique maps, relating data based on spatial and feature attributes, and producing custom applications.

The demonstration will include application scenarios related primarily to disaster management.

## Branch News



The Acadiana Branch is preparing to host the 2002 Annual Spring Meeting and Conference. The details of the conference, schedule of events, and registration information will be provided in this publication once the arrangements are finalized.

Three Acadiana Branch Members have received Louisiana Section Awards. **Dr. Paul Richards, P.E.** is the recipient of Outstanding Government Engineer Award and **Jan Robichaux,**

**E.I.,** the Outstanding Young Engineer Award. They will receive their respective awards at the Louisiana Section Installation Banquet in New Orleans later this month. In addition, **Travis Laurent,** University of Louisiana at Lafayette ASCE Student Chapter Past President, was awarded the Outstanding Civil Engineering Student Award at the Louisiana Section Meeting and Conference held in April. The Branch would like to congratulate these members for their exceptional achievements.

Two Acadiana Branch members received Life Member Status. Congratulations to **Gerald Dubroc, P.E.** and **Donald Richard, P.E.** for their accomplishments.

The ASCE membership drive is still underway. The first five ASCE members to recruit 3 or more members will be given a \$50 gift certificate to the restaurant of their choice. Please notify one of the Board members once you have recruited the

### Board of Directors:

#### President

**Jan C. Robichaux, E.I.**  
337-856-5981  
JanRobi@southernstructures.com

#### President Elect

**Glenn McCall, P.E.**  
337-237-2200  
glenn@fenstermaker.com

#### Vice President

**Larry Cramer, P.E.**  
337-232-0777  
lcramer@sellersandassociates.com

#### Treasurer

**John Bosch, P.E.**  
337-291-8590  
jbosch@lafayettegov.com

#### Secretary

**Kimberly Landry, E.I.**  
337-291-8522  
klandry@lafayettegov.com

#### Past President

**David S. Huval, Jr., P.E.**  
337-234-3798  
huval@1stnet.com

### Committee Members:

#### Younger Members

**Committee**  
**Boyd Simon, E.I.**  
337-234-6199

#### Membership Chairperson

**Phillip Parker, P.E.**  
337-233-9914

#### Public Relations Chairperson:

**Bridget Pitre Endom, E.I.**  
337-291-5879

#### Web Page Administrator:

**Kimberly Landry, E.I.**  
337-291-8522

#### University of Louisiana at Lafayette ASCE Student Chapter Contact Persons:

**Jan Robichaux, E.I.**  
337-856-5981

**McNeese State University ASCE Student Chapter Contact Persons:**

**William H. Miller, P.E.**  
337-439-4552

**Rico L. Orsot, P.E.**  
337-439-1731

# September 2001

Sun	Mon	Tue	Wed	Thu	Fri	Sat
						1
2	3	4	5	6	7	8
9	10	11	12	13	14	15
16	17	18	19	20	21	22
23	24	25	26	27	28	29
30						

## Schedule of Events

- **9/1** Labor Day
- **9/12** Installation Banquet
- **9/17** Houston ASCE Conf. Early Pre-Registration Discount Deadline



Acadiana Branch  
909 1/2 East University Avenue, Apt. B Lafayette, LA. 70503

**Civil Engineering**  
a better world by design

